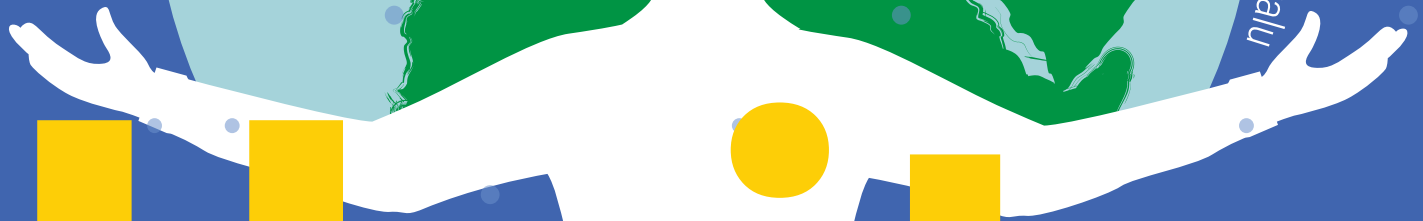


INNOVATE LOCALLY TO INSPIRE CHANGE GLOBALLY

Mexico City • Los Angeles • New York • Boston • Catamarca • Sao Paulo • Paris • London • Vihiga • South Africa • Yokohama • Tuvvalu



# Unite

## FOR CLIMATE RESILIENCE

Cities Joining Forces To Survive & Thrive

### Climate Resilient California & Californians

# The Urgent Need for Climate Resilience

We have about seven years to prepare Californians to become climate resilient.

The climate crisis is upon us. It will get a lot worse over the next few decades as the planetary heating shoots past 1.5°C by the early 2030s. We no longer have the luxury of relying just on mitigation of emissions. We need to embark on building climate resilience so that people can bend the emissions curve, survive the climate crisis, and rebound to a safer, healthier, more equitable, and sustainable world.

## Empowering Resilience

Climate Resilient California and Californians (CRC2) is an initiative dedicated to empowering the cities, suburbs, and rural areas of California, as well as its people to become resilient as they face a wide variety of new challenges brought on by the climate crisis. The innovative solutions needed to survive and thrive require forging cross-disciplinary partnerships among researchers, engineers, entrepreneurs, and trans-disciplinary partnerships between science and community leaders, including faith leaders, NGOs, and the public. Mayors and governors form the core of such trans-disciplinary partnerships as their leadership is essential to creating the climate policies and actions needed to protect the well-being of both people and nature (See Resilience Ecosystem).

“Our care for one another, and our care for the earth are intimately bound together.”

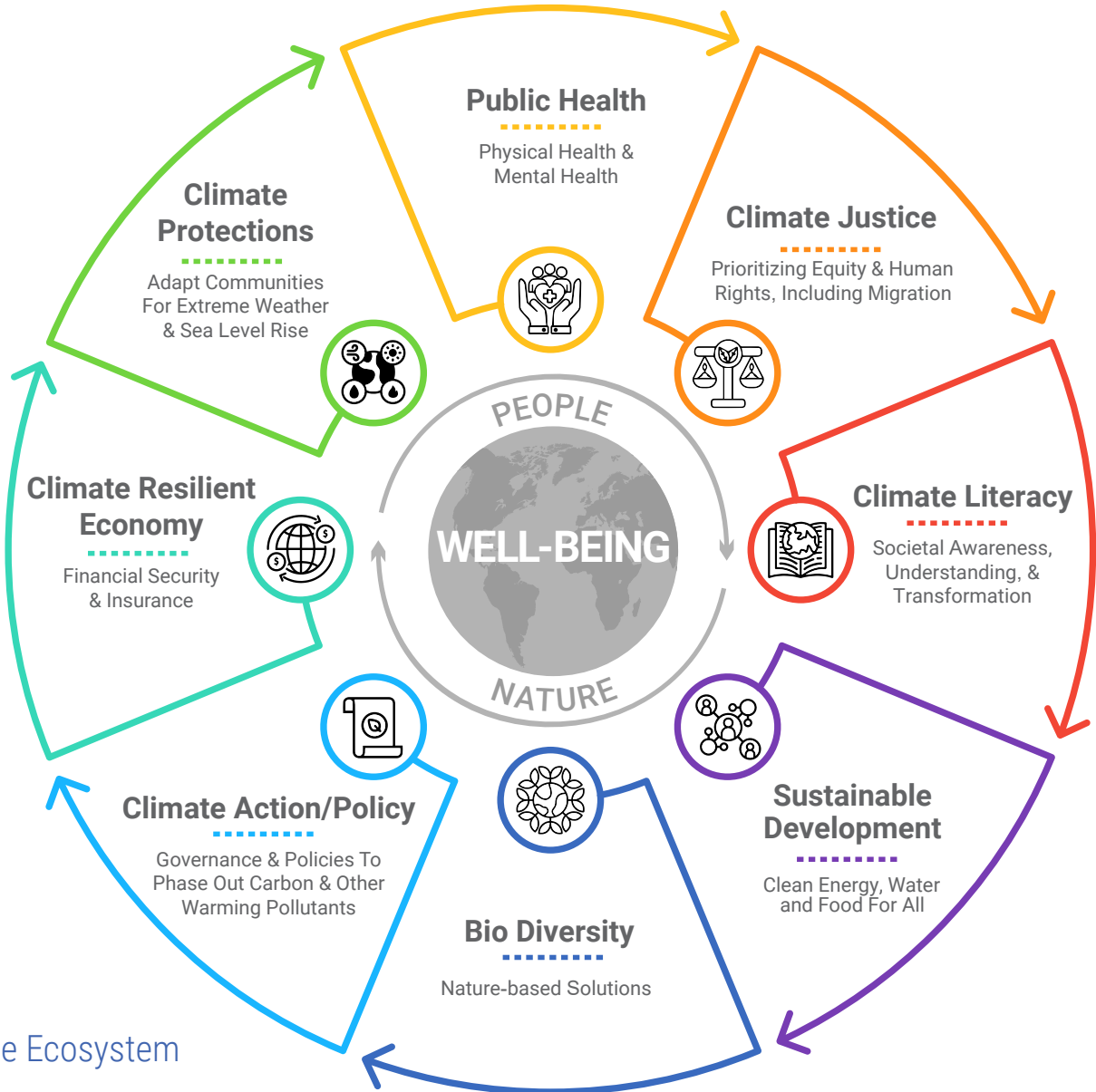
– Pope Francis

---

# A Strategy to Survive and Thrive the Climate Crisis

To enhance climate resilience, it is imperative that we base our efforts on a three-pronged strategy: first, mitigation efforts to diminish climate risks; second, adaptation strategies to cope with inevitable risks; and third, societal transformation that fosters and accelerates ongoing mitigation and adaptation measures.

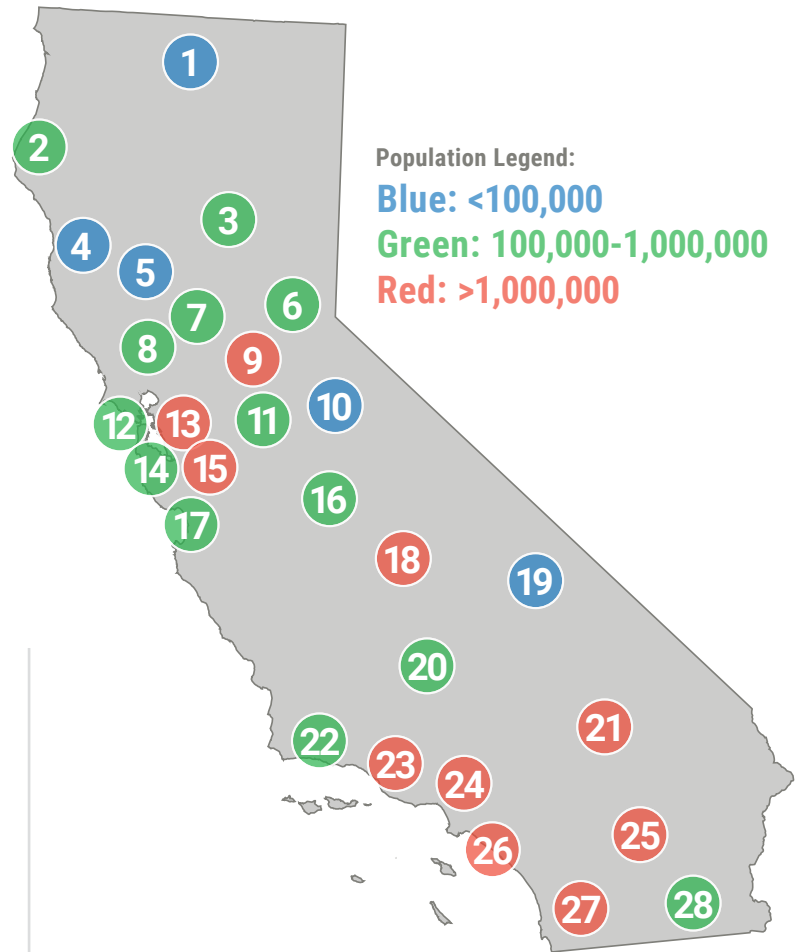
The MAST strategy (Mitigation, Adaptation and Societal Transformation) provides a strong framework for navigating the climate crisis. It was developed under the auspices of the Pontifical Academy of Sciences and Social Sciences and has been embraced by governors and mayors from all over the world as well as Pope Francis at the Climate Resilience Summit in the Vatican held in May 2024.



# Creating Blueprints for Resilience

California will innovate locally  
to inspire change globally

California has an opportunity to lead a global movement by creating Resilience Blueprints or templates that outline local solutions for navigating challenges brought on by the climate crisis. The goal is for 15 California cities and counties of the 28 shown on the map to implement key recommendations from the [Planetary Call to Action for Climate Resilience document](#) (Ramanathan, Suarez-Orozco, von Braun, Ford and Turkson, et al, 2024) signed at the Vatican in May of 2024. CRC2 is in a unique position to create and share innovative solutions around the globe as well as inspire the collaboration needed to solve this crisis.



In early 2025, CRC2 plans to host a regional summit in Los Angeles to launch the Resilience Blueprints of four pilot locations. The CRC2 summit will be one of 12 regional summits organized around the world, and these summits will culminate in a Summit of Hope for the youth at the Vatican later in the year.

Access the full list  
of CRC2's  
Transdisciplinary Team



Seed Funding  
Provided by:  
Sara Miller McCune